



LAWN MOWING LEGEND

-  ENCLOSED MOWING AREAS (SEE TABLE FOR APPROXIMATE ACREAGES)
-  SINGLE PASS MOWING (ASSUME 6' CUTTING WIDTH)

LAWN MOWING NOTES

1. MOWING IN AREAS SHOWN IS INTENDED TO EXTEND TO WOODLINES, WATER LINES IN PONDS, OR EDGES OF ROAD AS MAY BE APPLICABLE FOR EACH AREA.
2. MEASUREMENTS GIVEN ARE APPROXIMATE AND INCLUDE IN SOME CASES UNVEGETATED AREAS. MOWING SHALL BE APPROPRIATE WITHIN AREAS SHOWN AND AS DESCRIBED IN BID DOCUMENTS.






AREAS TO BE MOWED

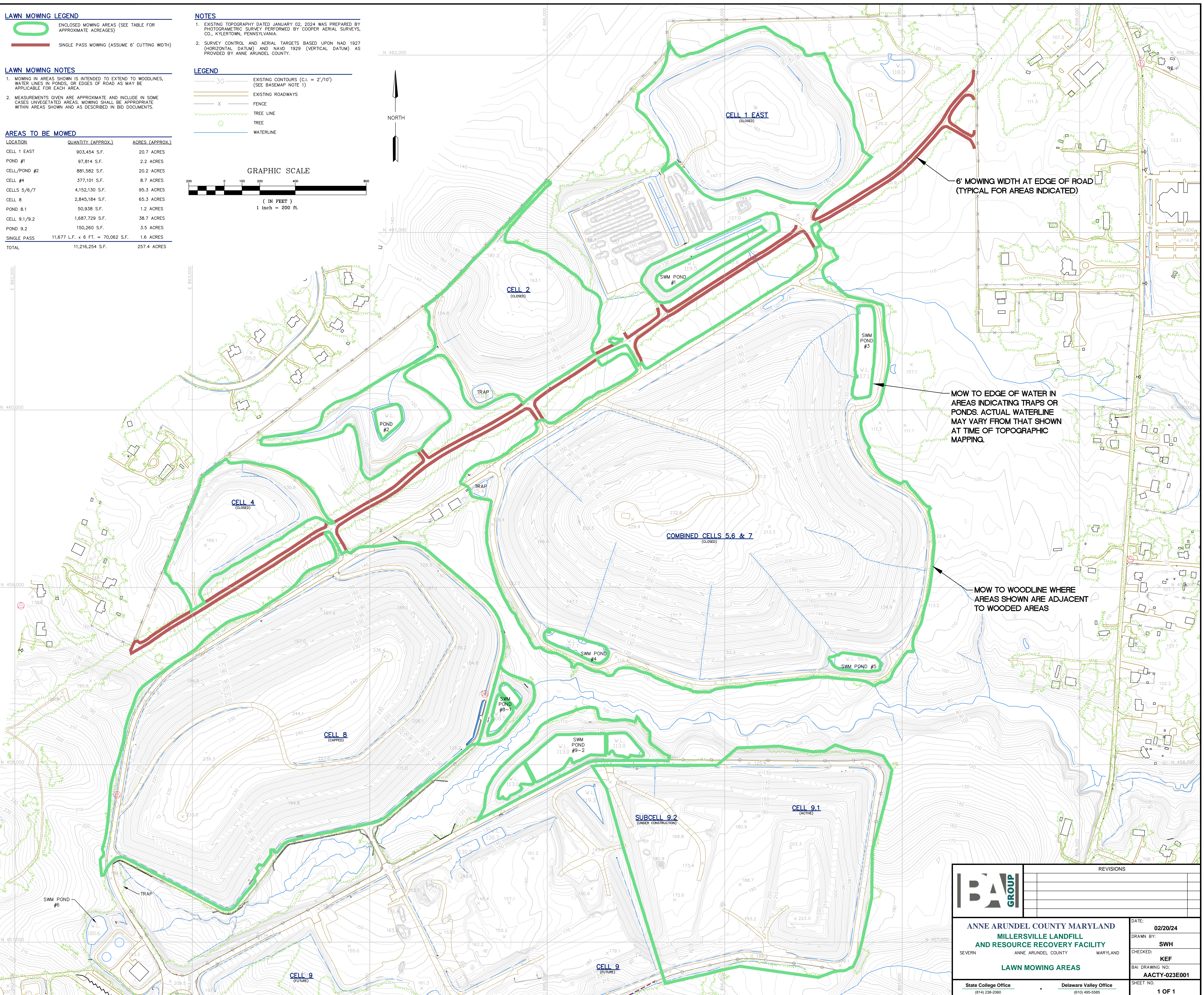
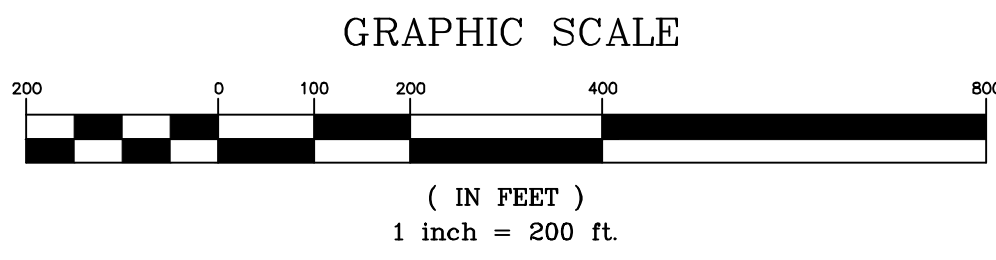
LOCATION	QUANTITY (APPROX.)	ACRES (APPROX.)
CELL 1 EAST	903,454 S.F.	20.7 ACRES
POND #1	97,814 S.F.	2.2 ACRES
CELL/POND #2	881,582 S.F.	20.2 ACRES
CELL #4	377,101 S.F.	8.7 ACRES
CELLS 5,6,7	4,152,130 S.F.	95.3 ACRES
CELL 8	2,845,184 S.F.	65.3 ACRES
POND 8.1	50,938 S.F.	1.2 ACRES
CELL 9.1/9.2	1,687,729 S.F.	38.7 ACRES
POND 9.2	150,260 S.F.	3.5 ACRES
SINGLE PASS	11,677 L.F. x 6 FT. = 70,062 S.F.	1.6 ACRES
TOTAL	11,216,254 S.F.	257.4 ACRES

NOTES

1. EXISTING TOPOGRAPHY DATED JANUARY 02, 2024 WAS PREPARED BY PHOTOGRAMMETRIC SURVEY PERFORMED BY COOPER AERIAL SURVEYS, CO., KYLERTOWN, PENNSYLVANIA.
2. SURVEY CONTROL AND AERIAL TARGETS BASED UPON NAD 1927 (HORIZONTAL DATUM) AND NAVD 1929 (VERTICAL DATUM) AS PROVIDED BY ANNE ARUNDEL COUNTY.

LEGEND


-  50' EXISTING CONTOURS (C.I. = 2'/10') (SEE BASEMAP NOTE 1)
-  EXISTING ROADWAYS
-  FENCE
-  TREE LINE
-  WATERLINE



6' MOWING WIDTH AT EDGE OF ROAD (TYPICAL FOR AREAS INDICATED)

MOW TO EDGE OF WATER IN AREAS INDICATING TRAPS OR PONDS. ACTUAL WATERLINE MAY VARY FROM THAT SHOWN AT TIME OF TOPOGRAPHIC MAPPING.

MOW TO WOODLINE WHERE AREAS SHOWN ARE ADJACENT TO WOODED AREAS

	REVISIONS	
	ANNE ARUNDEL COUNTY MARYLAND MILLERSVILLE LANDFILL AND RESOURCE RECOVERY FACILITY SEVERN ANNE ARUNDEL COUNTY MARYLAND	
	DATE:	02/20/24
	DRAWN BY:	SWH
	CHECKED BY:	KEF
	BAI DRAWING NO.:	AACTY-023E001
State College Office (814) 238-2060	Delaware Valley Office (610) 495-5585	SHEET NO. 1 OF 1